

## Jeongok Prehistory Museum

### Yeoncheon, South Korea

Jeongok Prehistory Museum by France based-studio X-Tu architects is now complete. Located on a paleolithic site of major archeological significance in Jeongok, South Korea, the facility aims to provide a multi-sensory space that represents ranging environments and atmospheres from the prehistoric landscape. We wished to honour the riverside landscape which saw the birth of the first inhabitants of Korea, and acknowledge the beauty of the two hill curves echoing the river meanders. How to enhance such a pre-existent form and its geological underground chasm?

- by digging the chasm to let the Earth tell its history
- by alleviating the visual hold of the project in order to let the chasm express itself ;
- for this purpose, the building will be enched into the hill which has been hollowed out and the stockrooms will be located underground ;
- by curving the central part of the building so as to unveil the geological crack (and also the sun, from the edge of the crack) ;
- by clothing it in a « shimmering skin » which will reflect the precipice from underneath.

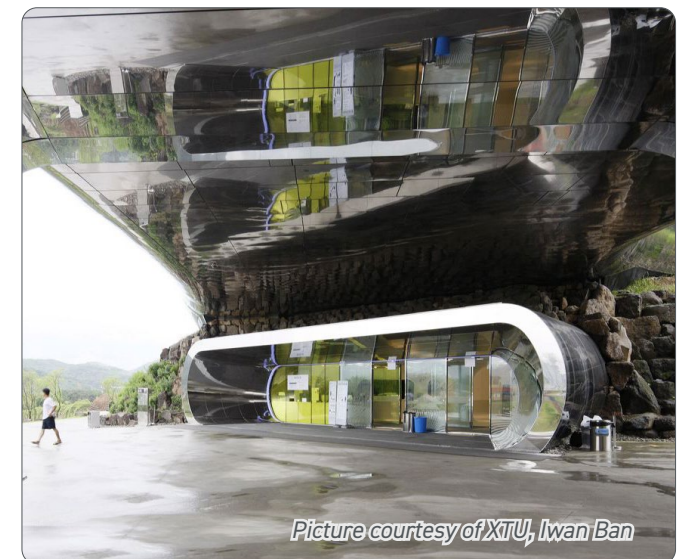
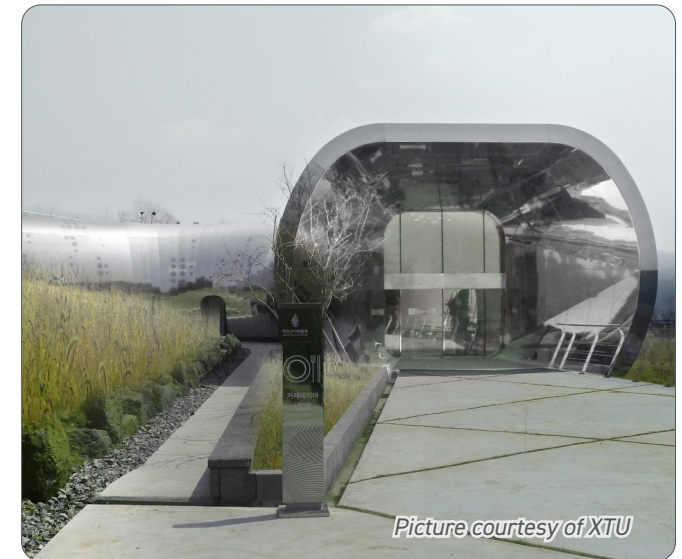
Thus set up, the project appears like a bridge stretched between two cliffs which can be seen from a long distance from the motorway.

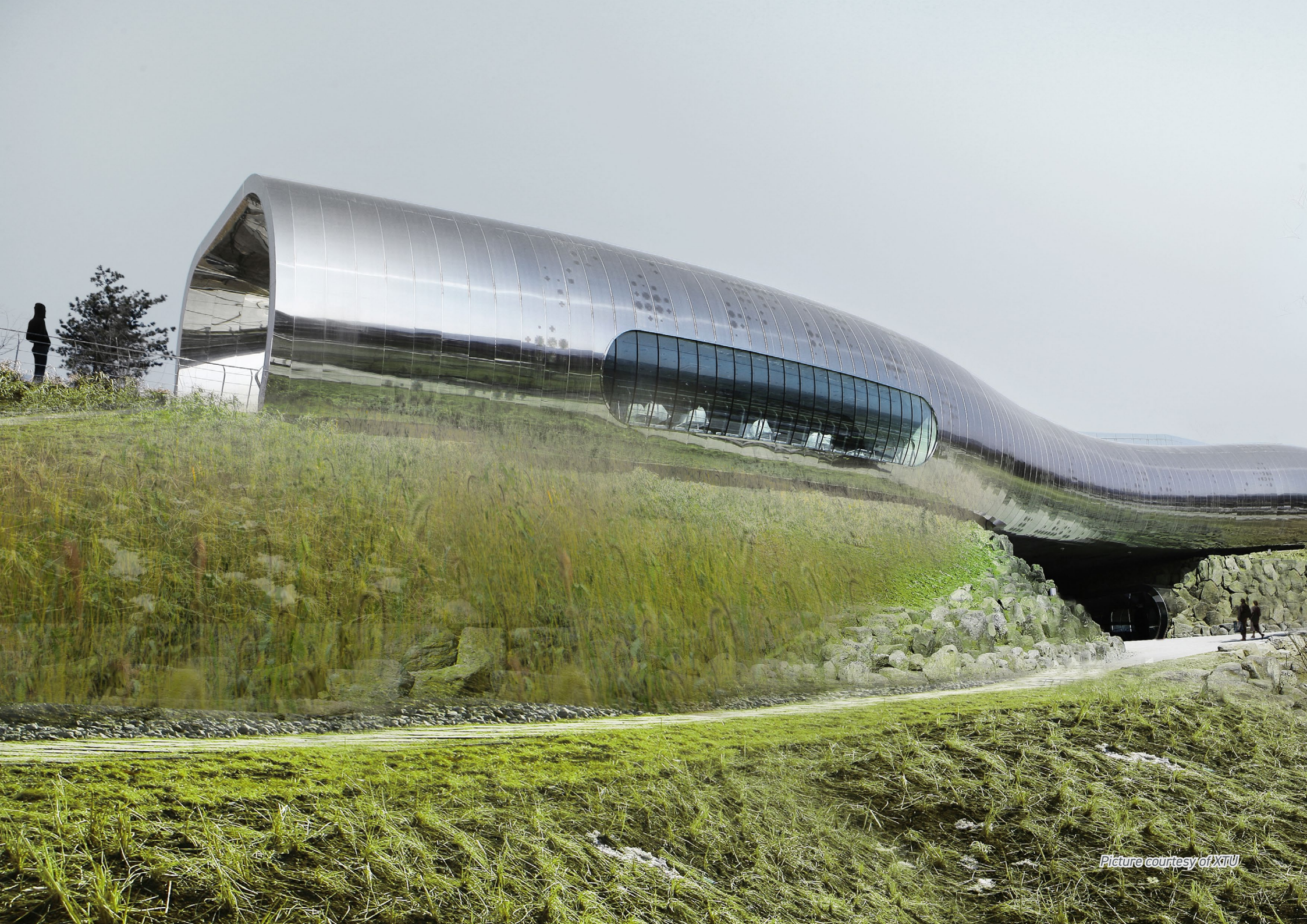
A double metal envelope with various perforations,

waving and soft, nearly organic, the front shimmers like a reptile skin; more or less glazed according to different places, changing with the light, it becomes a stainless steel mirror underneath which reflects the image of the chasm.

For the landscape from light and view, the envelope filters the light like a lattice. The double wall includes glazings and solar protections in perforated metal and makes it possible to have a perfect command of heat exchange of the building, in winter as in summer. The admission of natural light is adjustable according to the needs of scenographic effects. On the level of the cafeteria and the central space, panoramic windows open on the landscape.

Environment:	park side
Material:	mirror-finished stainless steel
Architects:	X-TU
Photographs:	XTU, Iwan Ban
More information:	xtuarchitects.com





Picture courtesy of XJTU