

Garrison Crossing

Toronto, Canada

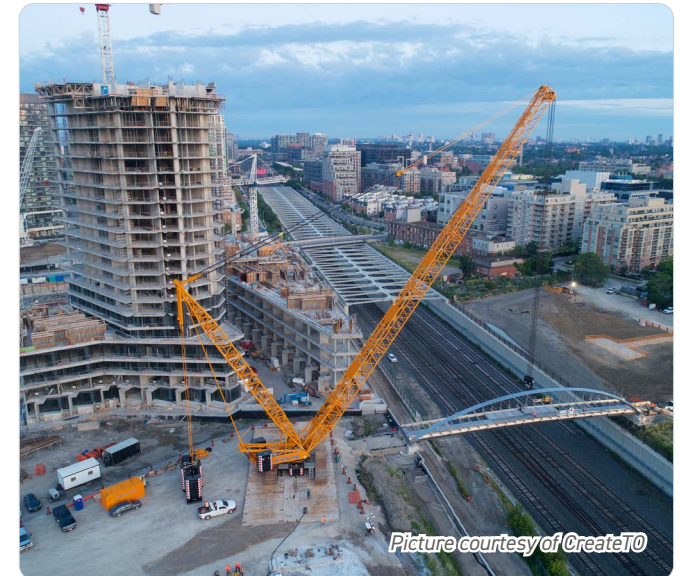
Designed by Pedelta Canada Inc., a member of the Dufferin Construction Company team, Garrison Crossing features the first stainless steel bridges to be built in Canada. Garrison Crossing features two bridge structures spanning two rail corridors in downtown Toronto. One bridge structure spans from the South Stanley Park extension over the Kitchener rail corridor and lands on the north side of Ordnance Triangle Park. The second bridge structure begins on the south side of Ordnance Triangle Park and spans

over the Lakeshore West rail corridor, landing in the Fort York grounds.

Duplex stainless steel was chosen because of its exceptional mechanical properties: it has a unique and beautiful appearance, it is highly durable, lightweight and corrosion and weather resistant, requires less maintenance and provides reduced life-cycle costs. Aside from the concrete deck and wood handrails, Garrison Crossing is comprised entirely of stainless steel. The north bridge structure is 130 metric tonnes and the south bridge structure is 125 metric tonnes.



Environment:	park side
Use:	main structure
Material:	duplex stainless steel
Fabricator:	Pedelta
Manufacturer:	ArcelorMittal
Architects:	CreateTO
Photographs:	CreateTO
More information:	garrisoncrossingbridge.ca





Picture courtesy of Create10